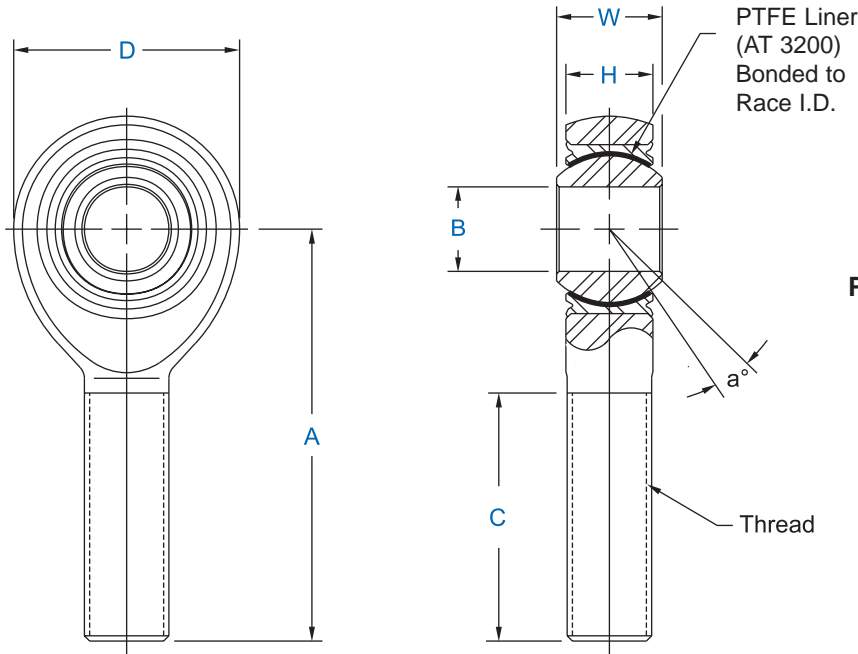




Performance Racing Series
PRM-T & PRXM-T Series Male Rod Ends - PTFE Lined



Specifications	
Body	- 4340 steel, heat treated, protective coated for corrosion resistance.
Race	- Stainless steel (17-4 PH per AMS 5643), heat treated.
Ball	- 52100 steel (AMS 7440), heat treated, hard chrome plated.
PTFE Liner	- (AT 3200) Permanently bonded to race inside diameter. Qualified to SAE-AS81820 (formerly MIL-B-81820).

PRM-T - Performance Racing Series

Rod End No.		DIMENSIONS IN INCHES								a° Misalign. Angle	Ultimate Radial Static Load Capacity Lbs.	No Load Pivotal Breakaway Torque In-Lbs.
Right Hand	Left Hand	B +.0000 -.0005	W +.000 -.005	H ± .005	A ± .010	D ± .010	Ball Dia. Ref.	C ± .031	Thread UNJF-3A			
PRM-5T	PRB-5T	.3125	.437	.327	1.875	.900	.593	1.187	5/16-24	14	8,300	2 - 10
PRM-6T	PRB-6T	.3750	.500	.416	1.938	1.025	.687	1.187	3/8-24	8	10,946	2 - 10
PRM-7T	PRB-7T	.4375	.562	.452	2.125	1.150	.781	1.281	7/16-20	10	14,049	5 - 15
PRM-8T	PRB-8T	.5000	.625	.515	2.438	1.337	.875	1.468	1/2-20	9	23,310	5 - 15
PRM-10T	PRB-10T	.6250	.750	.577	2.625	1.525	1.062	1.562	5/8-18	12	25,909	5 - 15
PRM-12T	PRB-12T	.7500	.875	.640	2.875	1.775	1.250	1.687	3/4-16	13	34,319	5 - 15

PRXM-T - Performance Racing - Heavy Duty Shank Series

Rod End No.		DIMENSIONS IN INCHES								a° Misalign. Angle	Ultimate Radial Static Load Capacity Lbs.	No Load Pivotal Breakaway Torque In-Lbs.
Right Hand	Left Hand	B +.0000 -.0005	W +.000 -.005	H ± .005	A ± .010	D ± .010	Ball Dia. Ref.	C ± .031	Thread UNJF-3A			
PRXM-4T	PRXB-4T	.2500	.375	.337	1.562	.806	.531	.968	5/16-24	6	7,544	2 - 10
PRXM-5T	PRXB-5T	.3125	.437	.327	1.875	.900	.593	1.187	3/8-24	14	9,135	2 - 10
PRXM-6T	PRXB-6T	.3750	.500	.416	1.938	1.025	.687	1.187	7/16-20	8	10,946	2 - 10
PRXM-7T	PRXB-7T	.4375	.562	.452	2.125	1.150	.781	1.281	1/2-20	10	14,049	5 - 15
PRXM-8T	PRXB-8T	.5000	.625	.515	2.438	1.337	.875	1.468	5/8-18	9	23,310	5 - 15
PRXM-10T	PRXB-10T	.6250	.750	.577	2.625	1.525	1.062	1.562	3/4-16	12	25,909	5 - 15